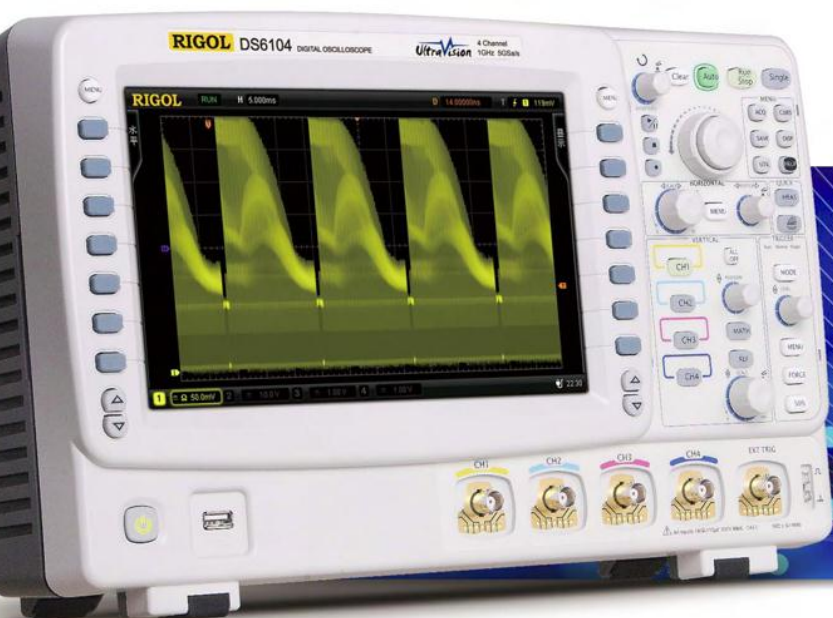


RIGOL
Beyond Measure



Rigol PA1011 Application Note

Application Notes
Comparison Guides
FAQs

How-To Guides

Programming Manuals

Quick Start Guides

Support Information

User's Guides



- **Introduction:**

The PA1011 is a USB controlled 10 watts 1 MHz power amplifier. The PA1011 features a $\pm 10V$ input and a $\pm 12 V$ output.

The PA1011 offers a selection of useful features, such as:

- 10X amplification
- Inverting and non-inverting output
- DC offset
- Storable amplification settings; allowing independent operation

- **Usage:**

The PA1011 can be controlled through a PC or a compatible function generator such as the Rigol DG1022 or the DG5000 series function-generators

- The PA1000 control software provides a simple to use graphical interface:





- **Controlling the PA1011 with the DG1022:**

- Connect via USB cable the back port on the PA1011 to the front USB port of the DG1022 (A yellow link light will be observed on the PA1011)
- Press the “Utility” button on the DG1022
- The Utility menu will appear as below
- Press the button corresponding with “PA”



- The Power Amplifier menu will appear on the screen as below:



- PA will be off by default, press the button corresponding with “Switich” in order to enable the PA output. A green



output light will now be observed on the PA

- The amplification scale can also be toggled from a default of 1X to 10X as observed below:





- The DC offset is adjustable as well through the DG1022 by pressing the OffsOFF button to enable the offset and set it's value.





For more information or questions contact us directly at:

Rigol Technologies USA
7401 First Place
Suite N
Oakwood Village, OH 44146

You can reach us directly at:

(440) 232-4488

877-4-RIGOL-1

info@rigol.com

www.rigolna.com (Rigol North America website)